

Interactive Visualization:

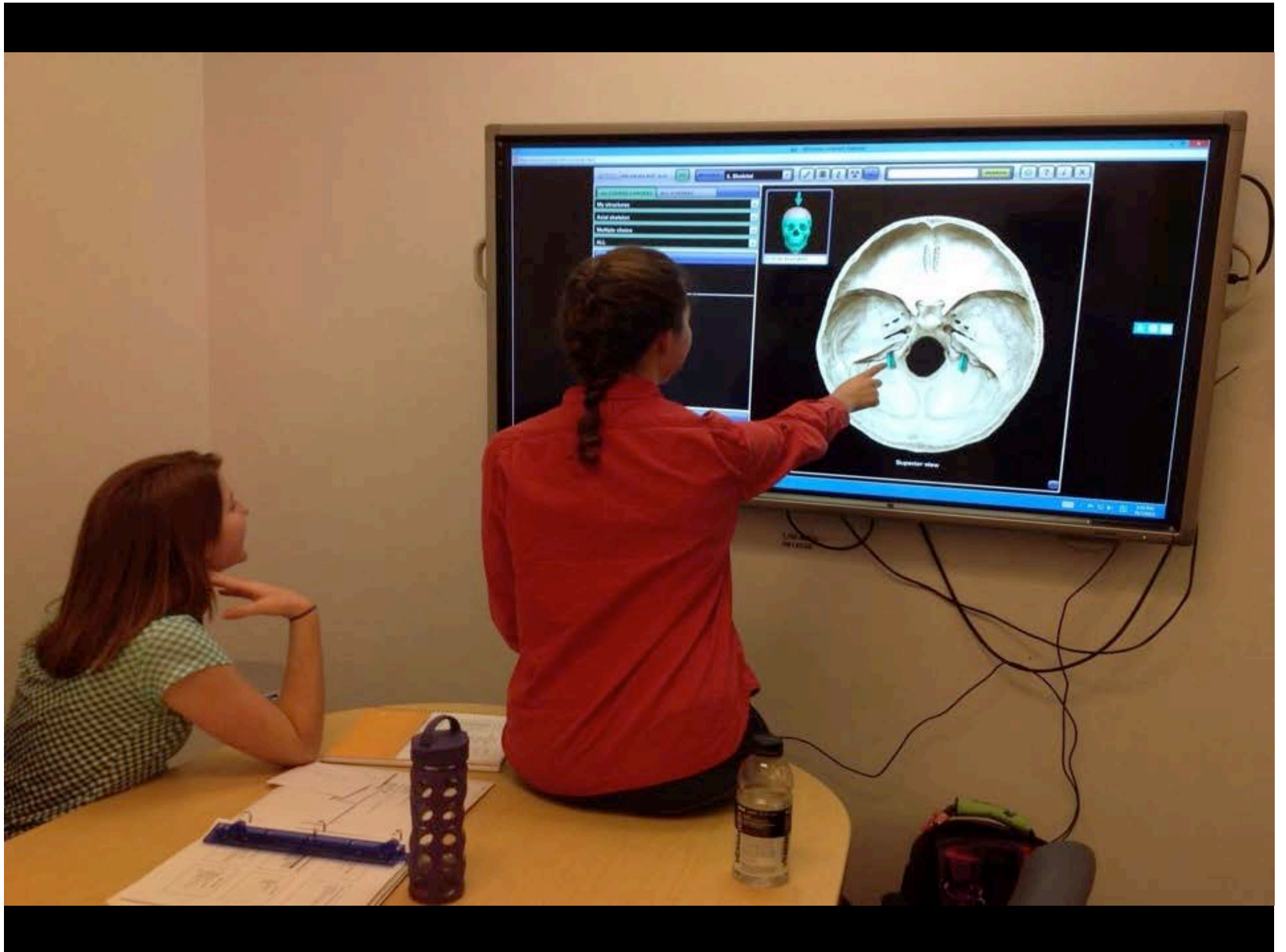
Video Walls for Collaborative Research and Discovery

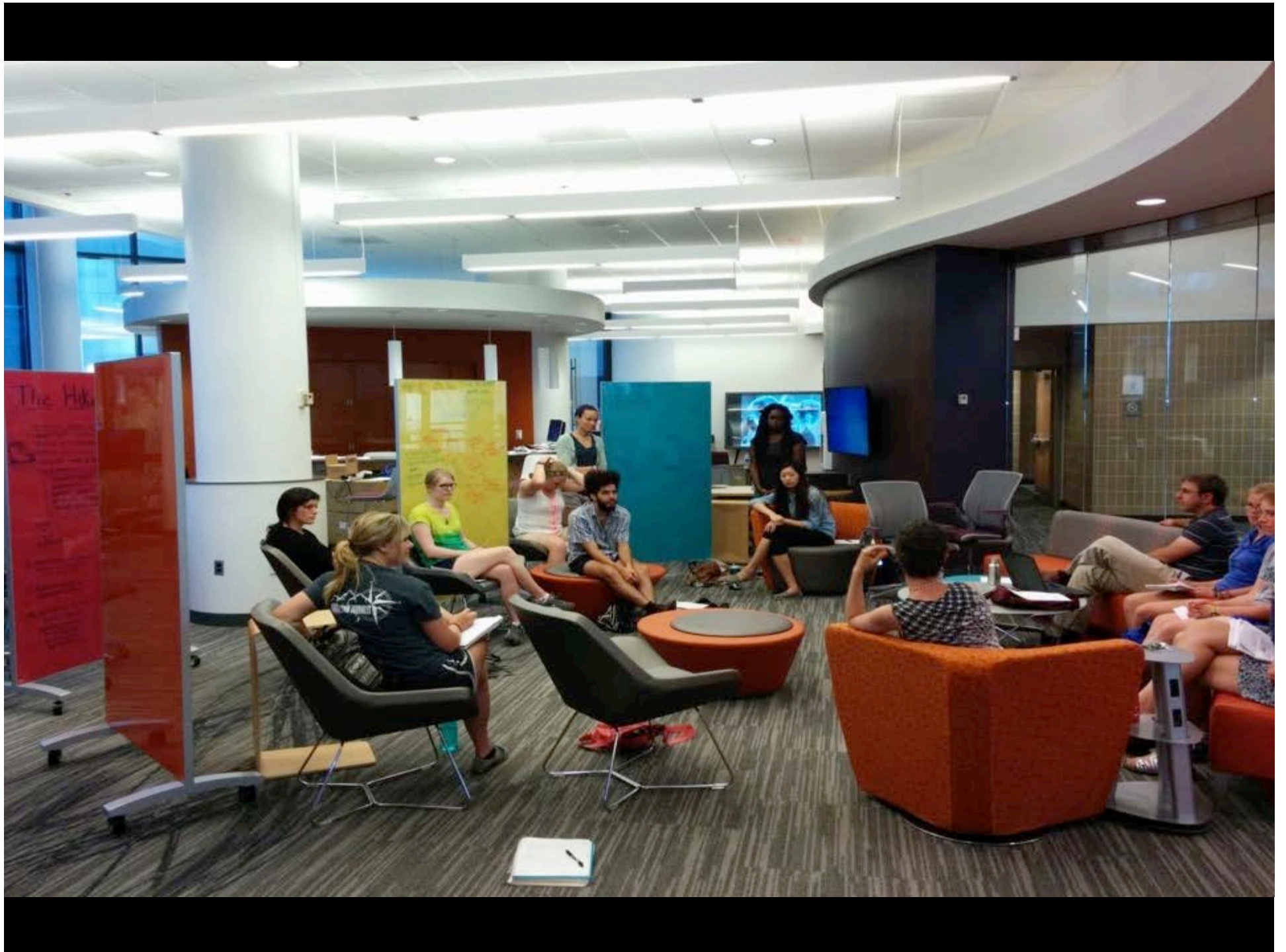
A Snapshot of CURVE

DLF Forum | 10.29.2014













CINEMASSIVE

Exit

Save

Wall Control

On

Off

Close All

Presets

Preset 1

Preset 2

Preset 3

Preset 4

Preset 5

Preset 6

Preset 7

Touch PC

Touch Mac

Custom Presets

Custom 1

Custom 2

Custom 3

Fixed Preset 8

Touch PC 1

Touch PC 2

Touch PC 3

Source Volume

Close Mic Pop-Up

Mic 1	Mic 2	Touch PC	Touch Mac	BYOD Audio
↓	↓	↓	↓	↓
↓	↓	↓	↓	↓
@	@	@	@	@

KVM Switch

Mac #3

Work Sta #1

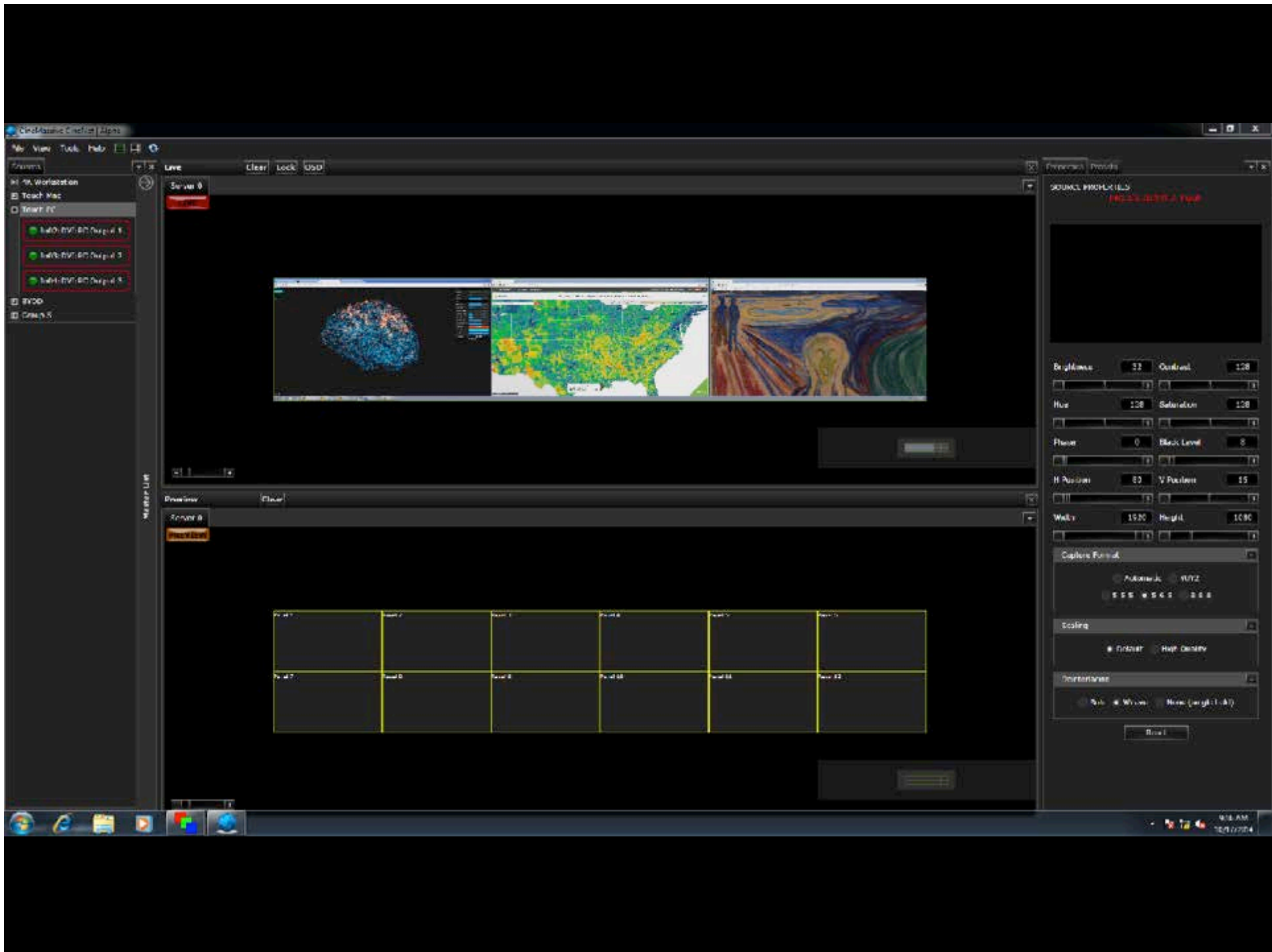
Unused

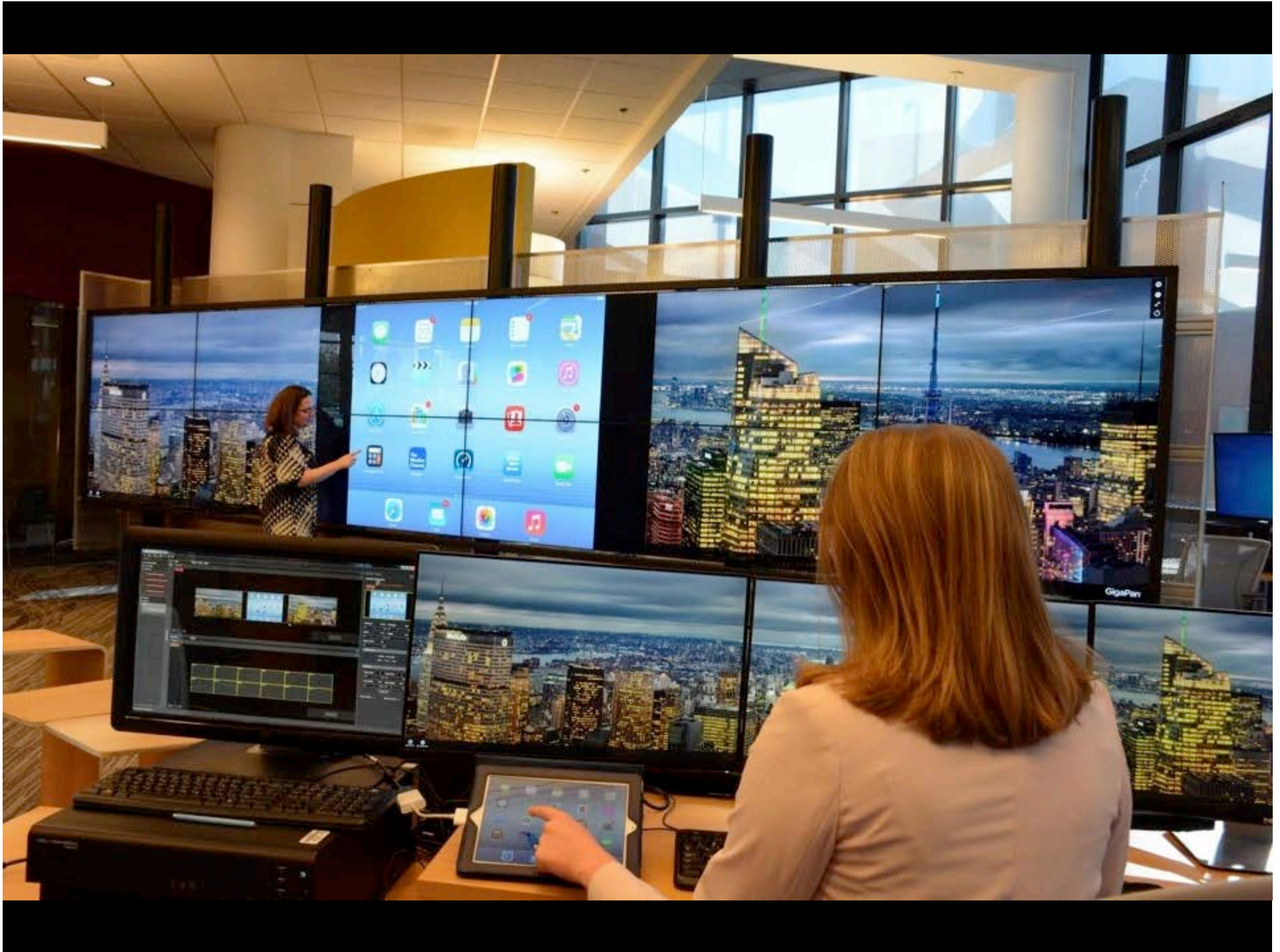
Unused

PC

Mac

Touch



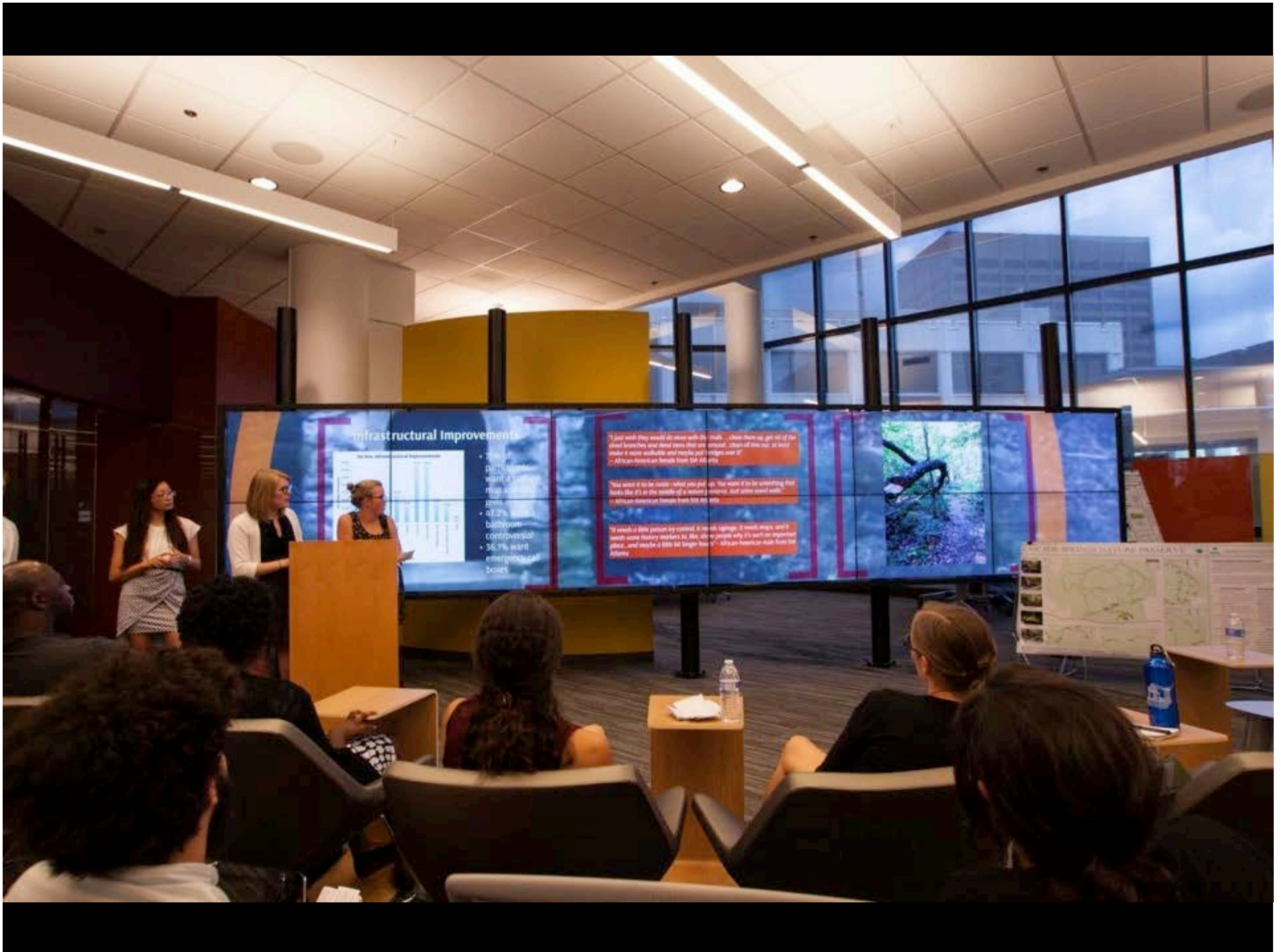




Collaborative Workstations:

5 PCs: 12 processor cores, 500 GB SSD, 128 GB RAM, 1GB NVIDIA Quadro K600 or 4GB NVIDIA Quadro K5000 graphics cards

2 Mac Pros: 6 processor cores, 1 TB hard drive, 32 GB RAM, Dual AMD FirePro D500 graphics processors with 3GB of GDDR5 VRAM each



Infrastructural Improvements

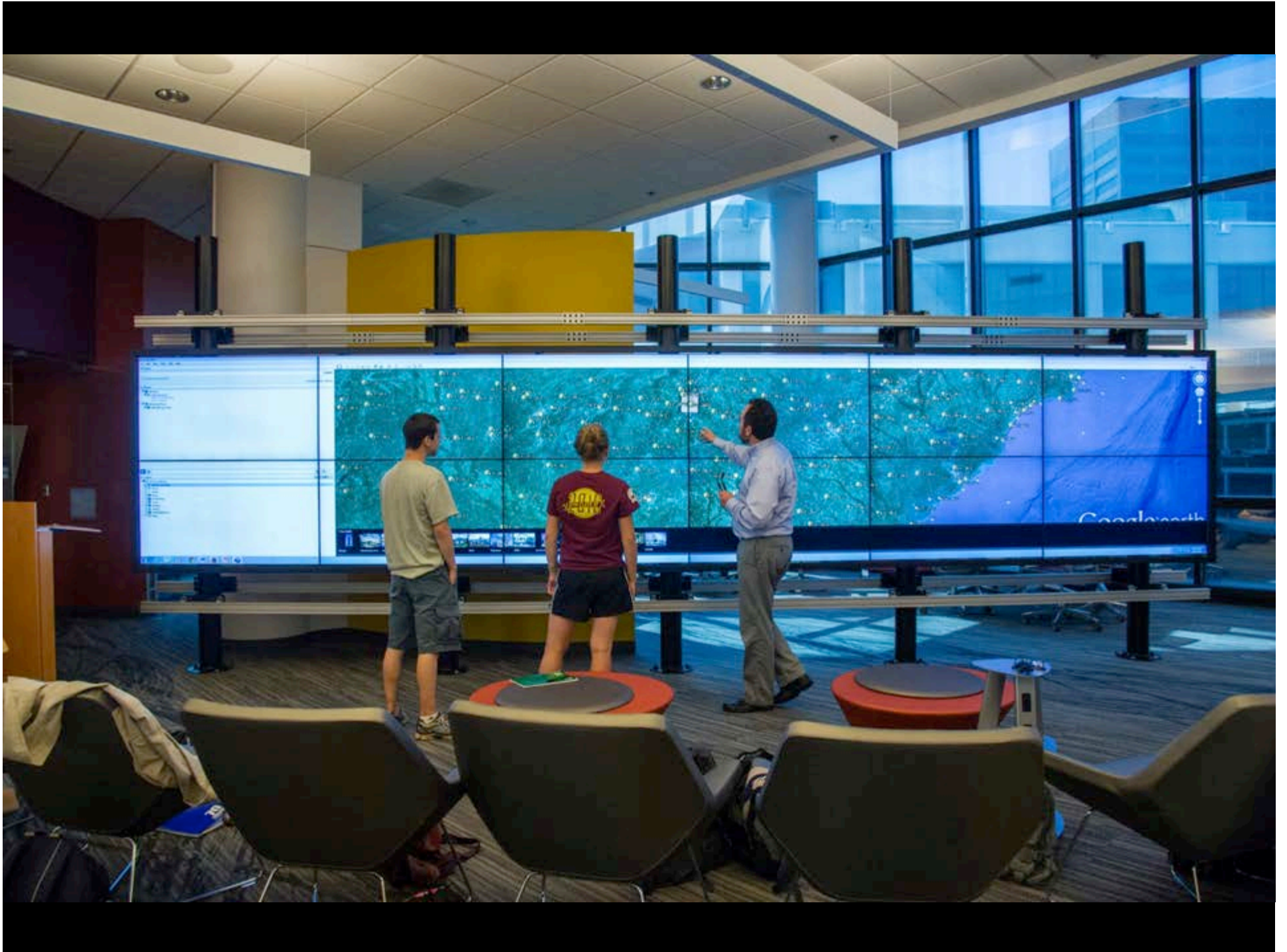
- 75% of participants want a new gas station
- 42.2% bathroom controversial
- 36.3% want emergency boxes

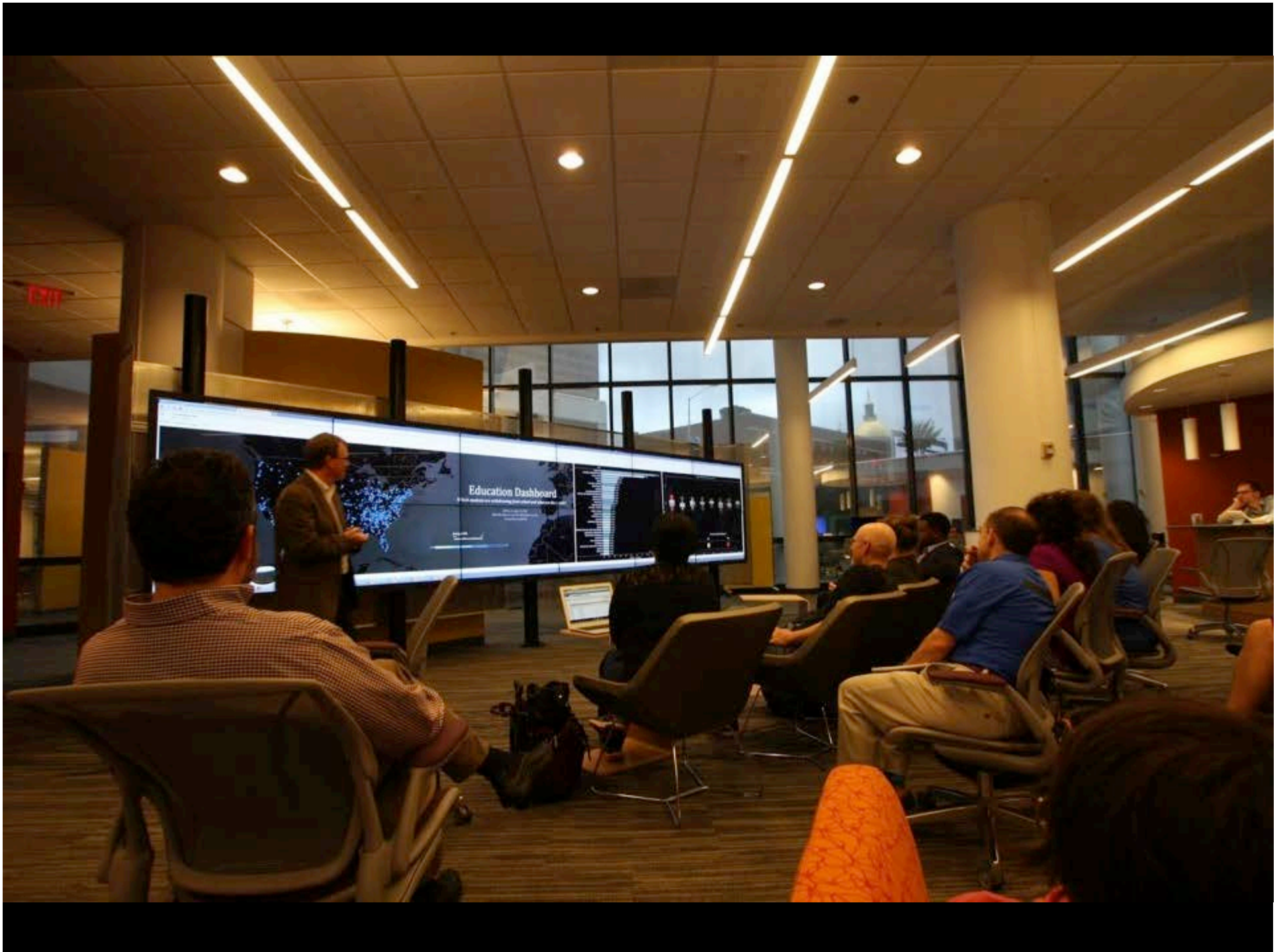
"I just wish they would do more with the roads... there's more up, get rid of the dead branches and dead trees that are around... clean up the car... at least make it more walkable and maybe put a bike lane on it"
- African American female from 2018 survey

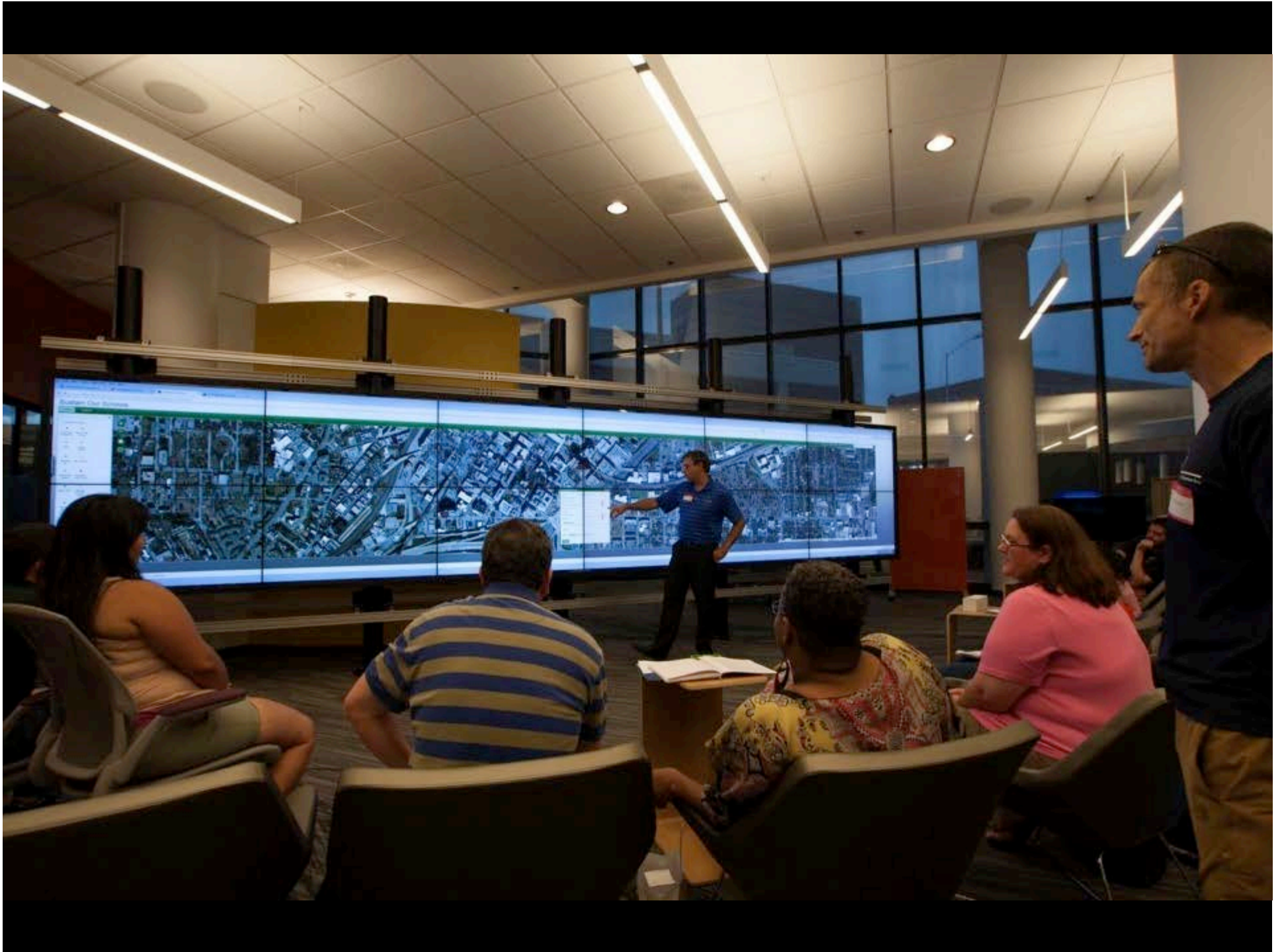
"The worst it is to be stuck - when you just do. The worst it is to be stuck when there's like it's in the middle of a road... and you can't go...
- African American female from 2018 survey

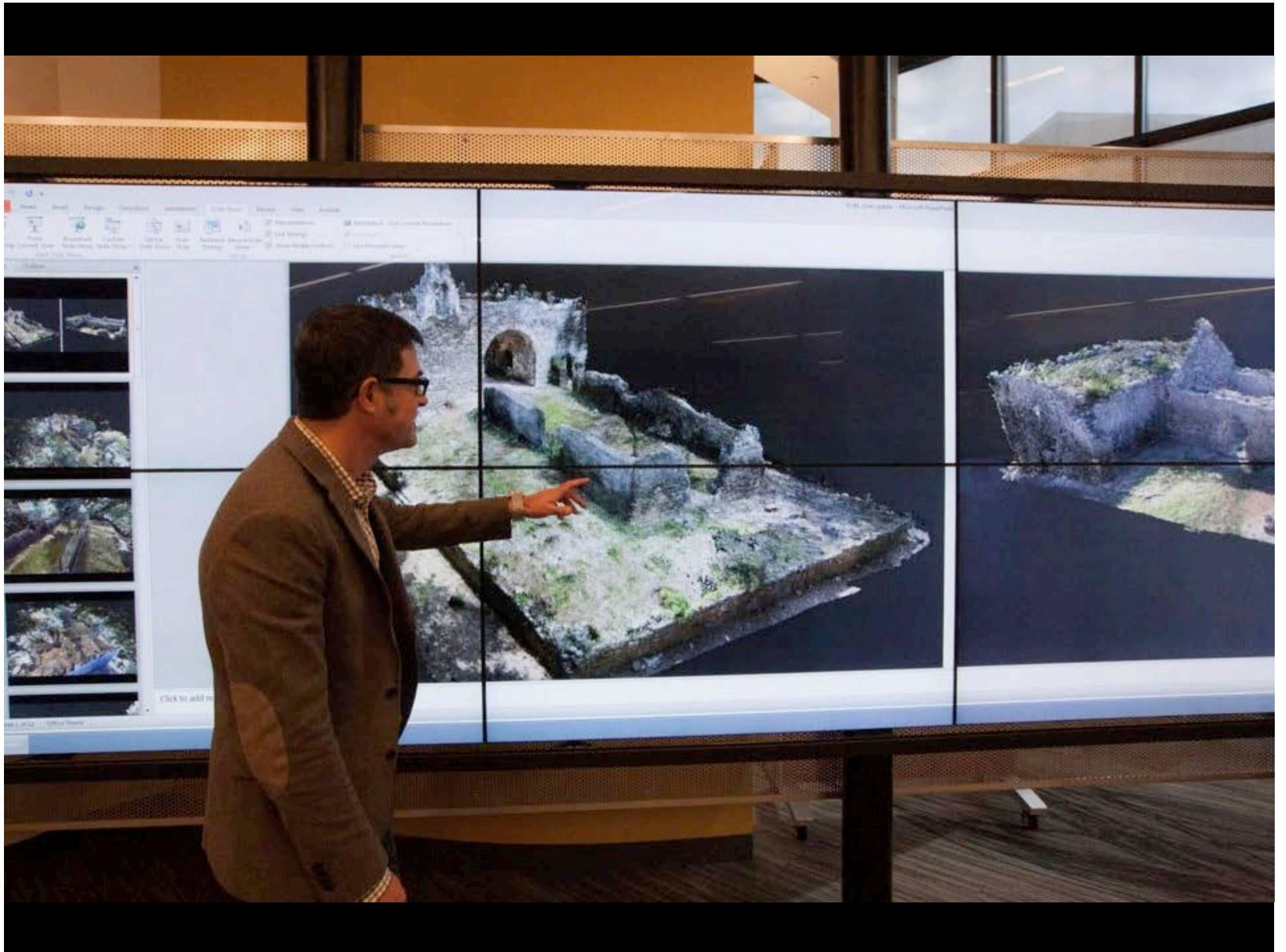
"I wish it had more by covered it in the signs... it needs signs, and it needs some history markers in it, like, like in people why it's such an important place... and maybe a little bit longer too"
- African American male from 2018 survey

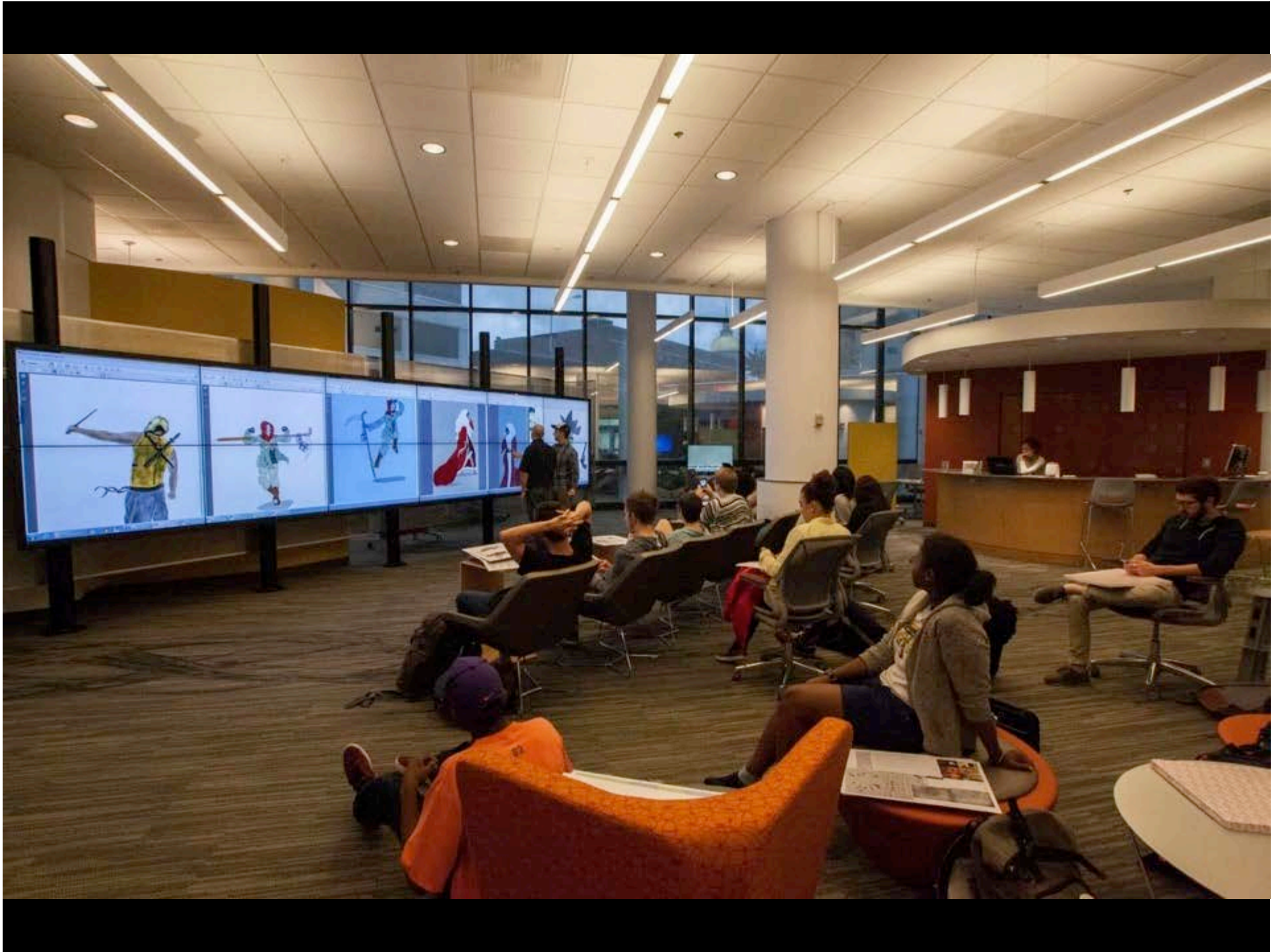








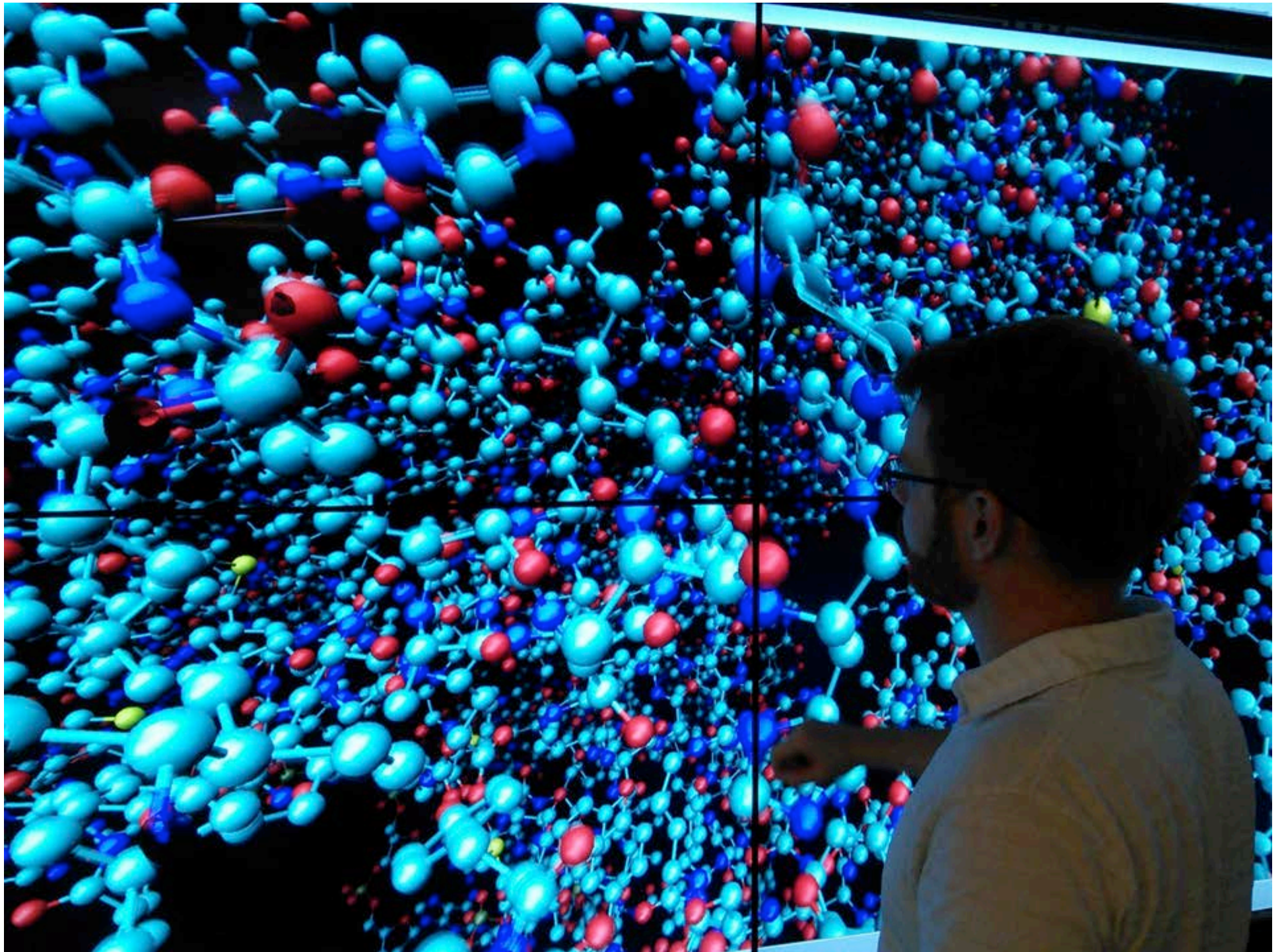


















Generated with [Agisoft PhotoScan](#)

Thanks,

CURVE Core Design Team

Krista Graham, Head, Digital Library Services, kgraham13@gsu.edu

Khyle Hannan, Library Facilities Coordinator, khannan1@gsu.edu

Joseph Hurley, Interim Director, CURVE, jhurley@gsu.edu

Bryan Sinclair, Associate Dean, Project Leader, bsinclair@gsu.edu

Visit Us

<http://curve.gsu.edu> (Main)

<http://bit.ly/curvegsu> (Design &

Planning)

